



PETITS ARTISTES

*An Interactive Digital Art Kit Inspired by
Samuel & Sons Iconic Ad Campaigns*



SAMUEL & SONS IS TRIM.

samuelandsons.com



SAMUEL & SONS
presents PETITS ARTISTES



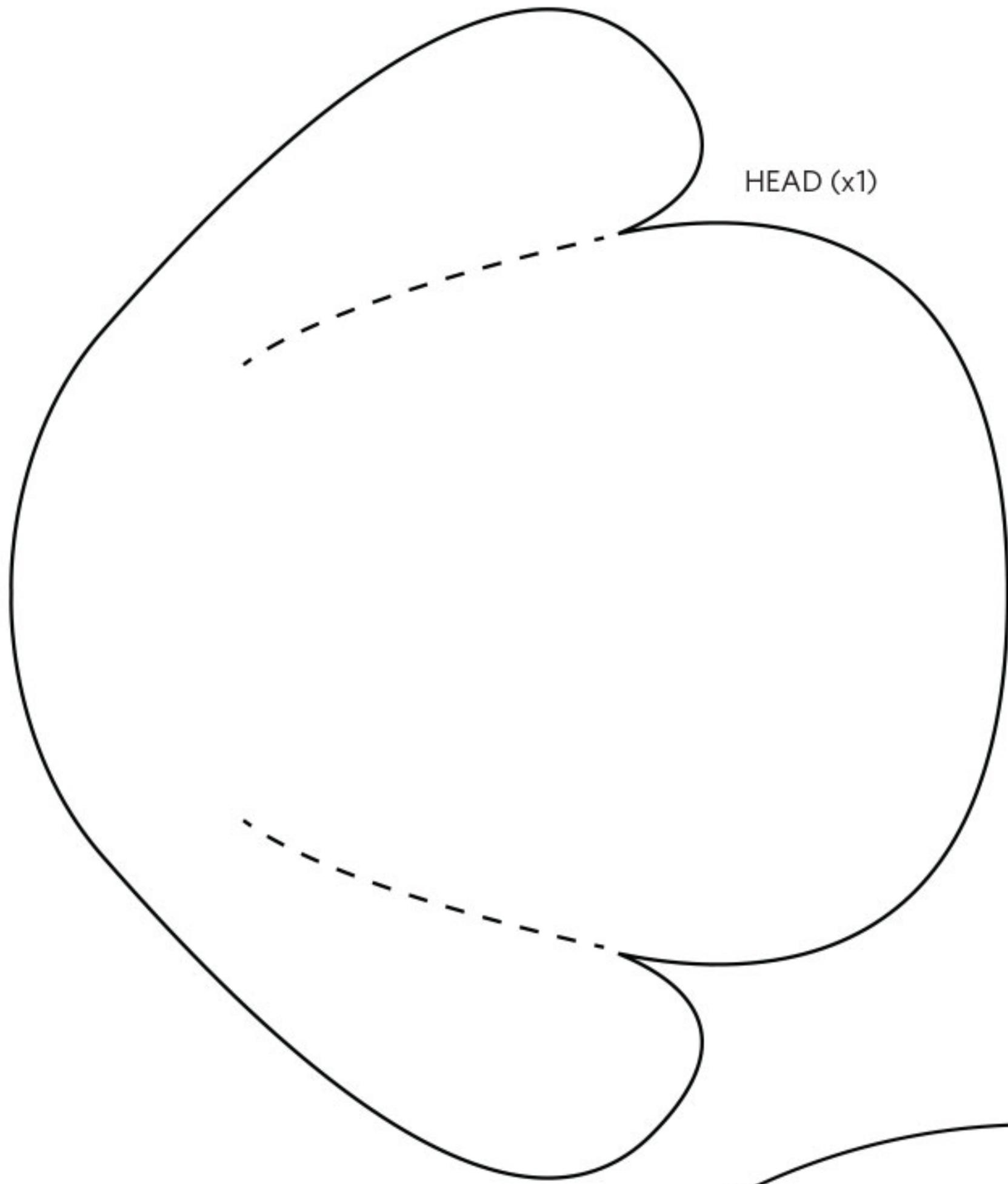


Trés
Sheep!

SAMUEL & SONS IS TRIM.

samuelandsons.com





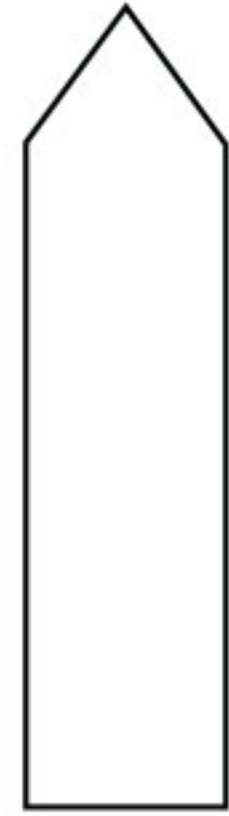
HEAD (x1)

MATERIALS:

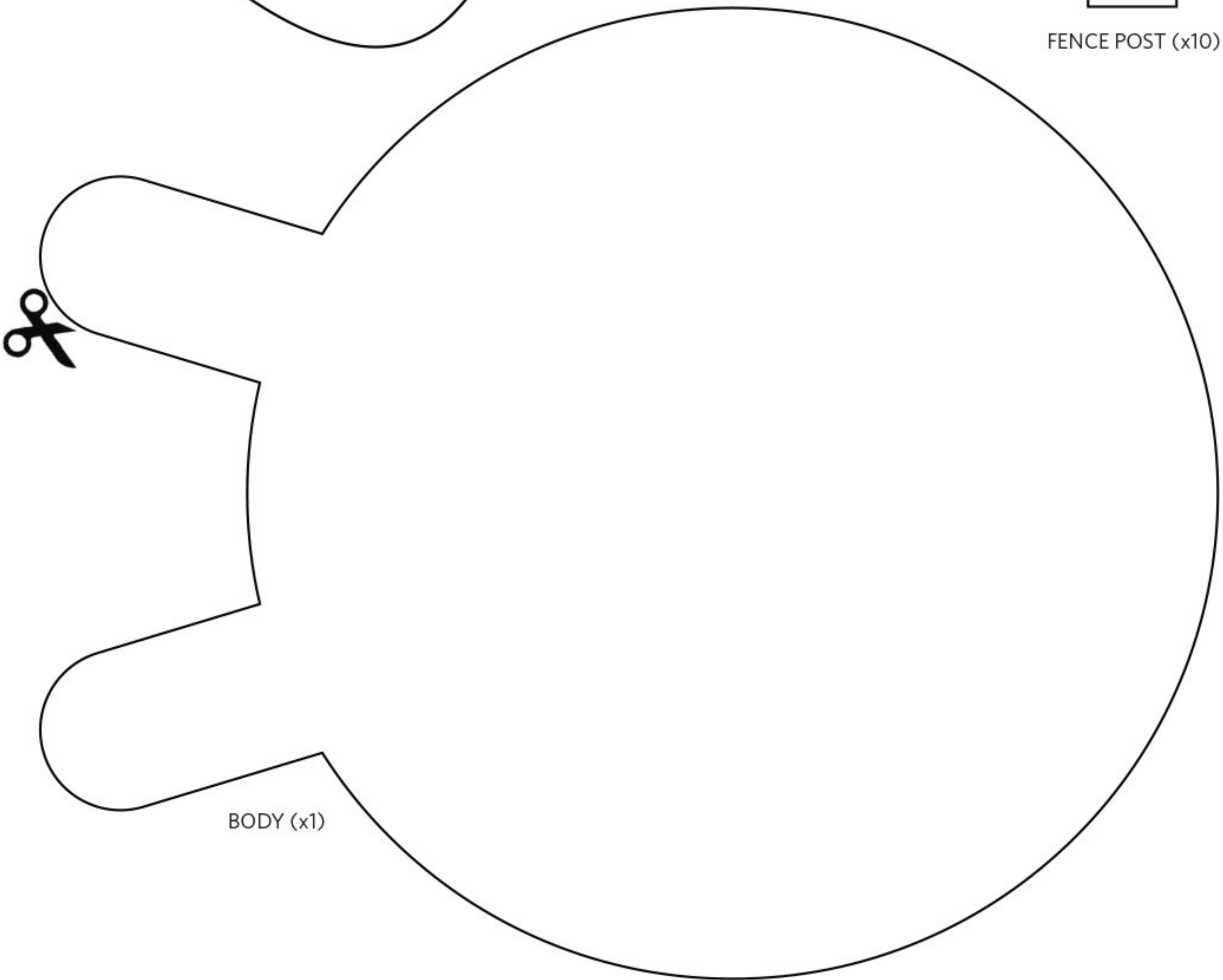
- Paper
- Scissors
- Cotton Balls
- Glue



EYES (x1 PAIR)



FENCE POST (x10)



BODY (x1)

FENCE BASE (x2)





Print and cut the patterns for the body, head and eyes of the sheep on color paper. You can choose to use one color paper or print the pattern in different colors, then mix and match.



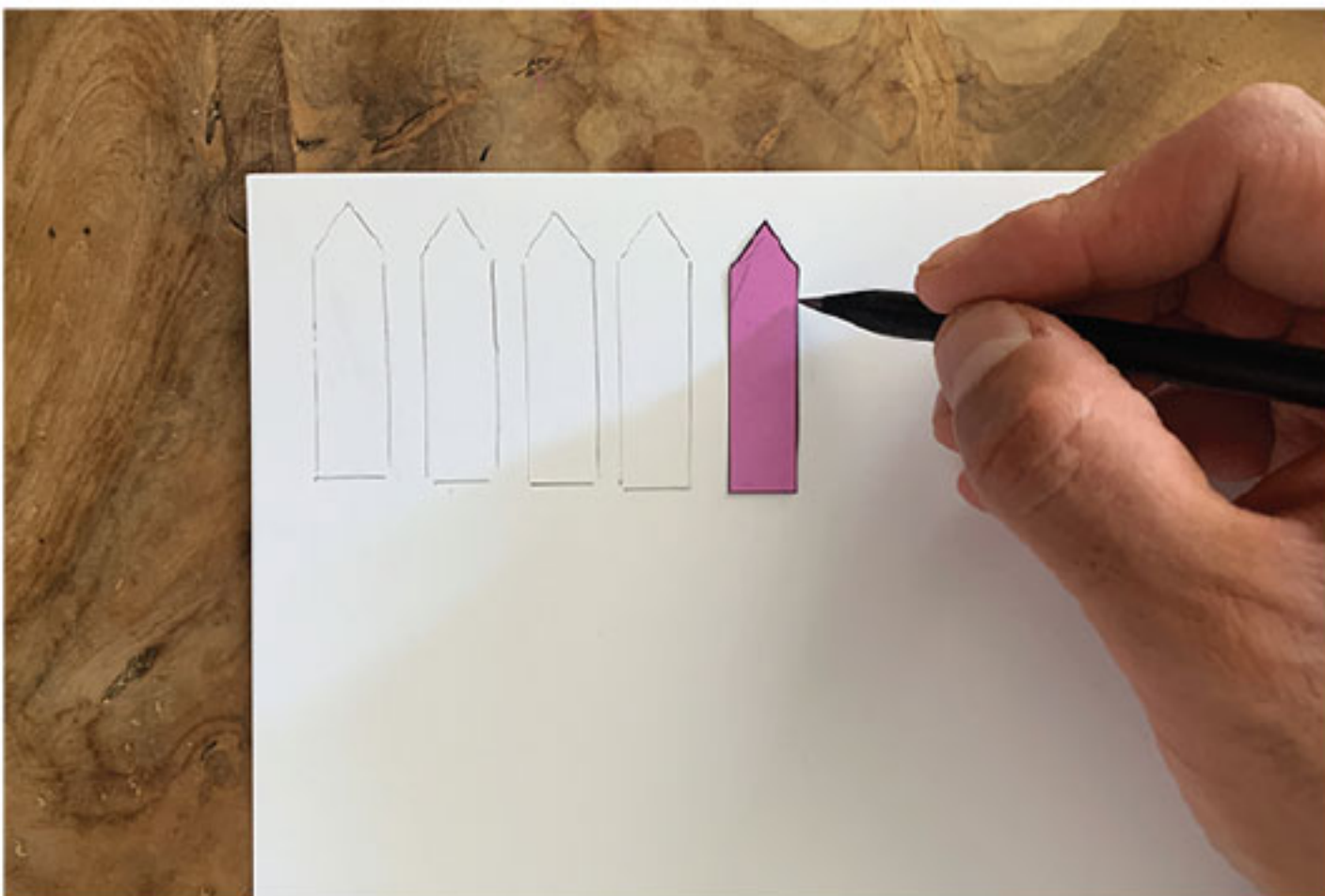
Apply some glue to the body of the sheep, making sure you don't get it on the legs.



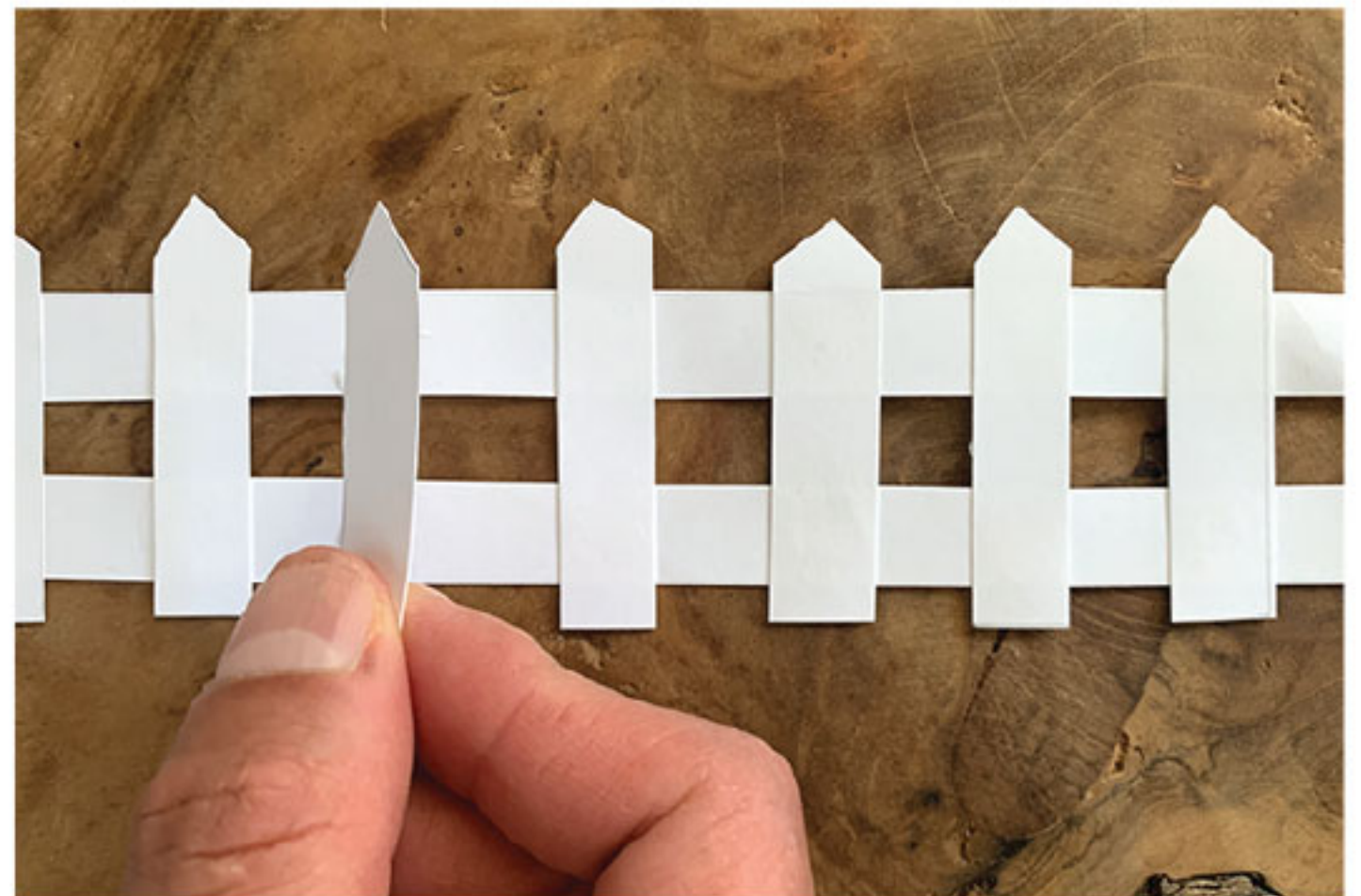
Add the cotton balls all over the body of the sheep.



Glue the eyes, then glue the head on top of the cotton balls. Glue a small piece of cotton at the top of the head.



Cut the two patterns of the fence. Trace the longer piece twice and the fence post 10 times, then cut all your new fence pieces.



Glue your fence posts evenly across the two longer pieces to finish your fence.





Copelia



Sully



Oxford

Perfect Specimens



Cabana



Oxford



Zigzag



Normandy



Le Duc

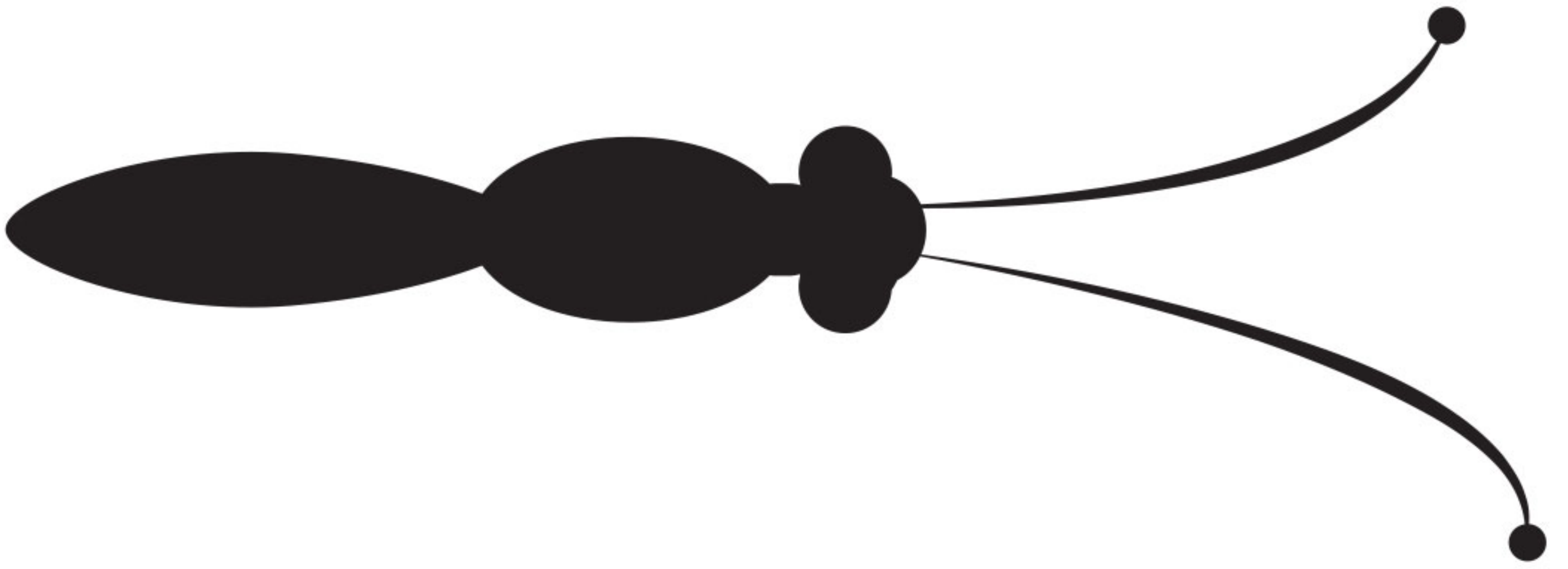


Ajouré

SAMUEL & SONS IS TRIM.

www.samuelandsons.com







MATERIALS: Paper, Paint, Brushes.



Print the center of your butterfly using the template.



And fold it exactly at the center of the butterfly body.



Distribute paint inkblots on one side only to form a butterfly wing shape (this could take multiple attempts, don't worry!).



Fold the paper in half again and press gently to spread the paint inkblots.



Slowly open the folded paper revealing the butterfly image. Create as many butterflies as you want in multiple colors!





NOT JUST YOUR
PLAIN VANILLA



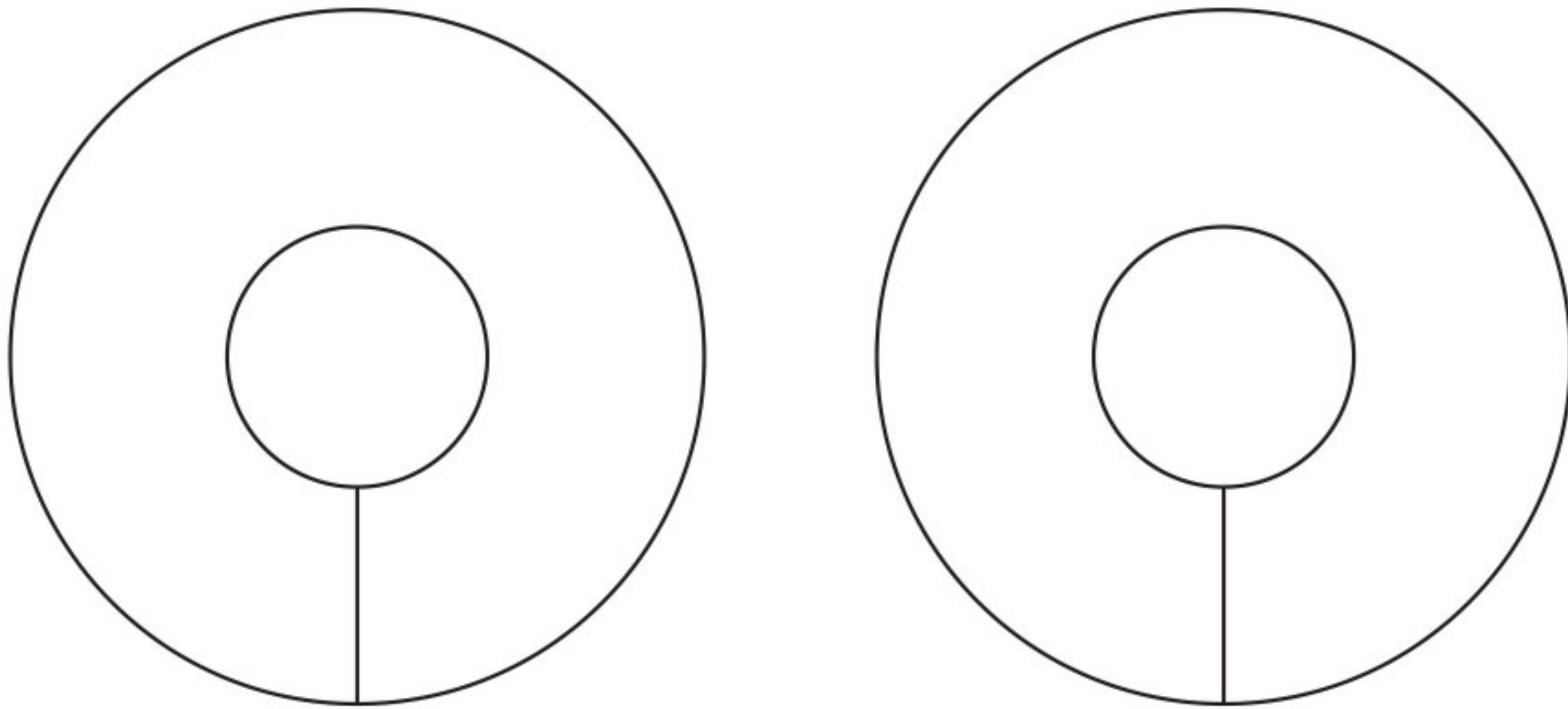
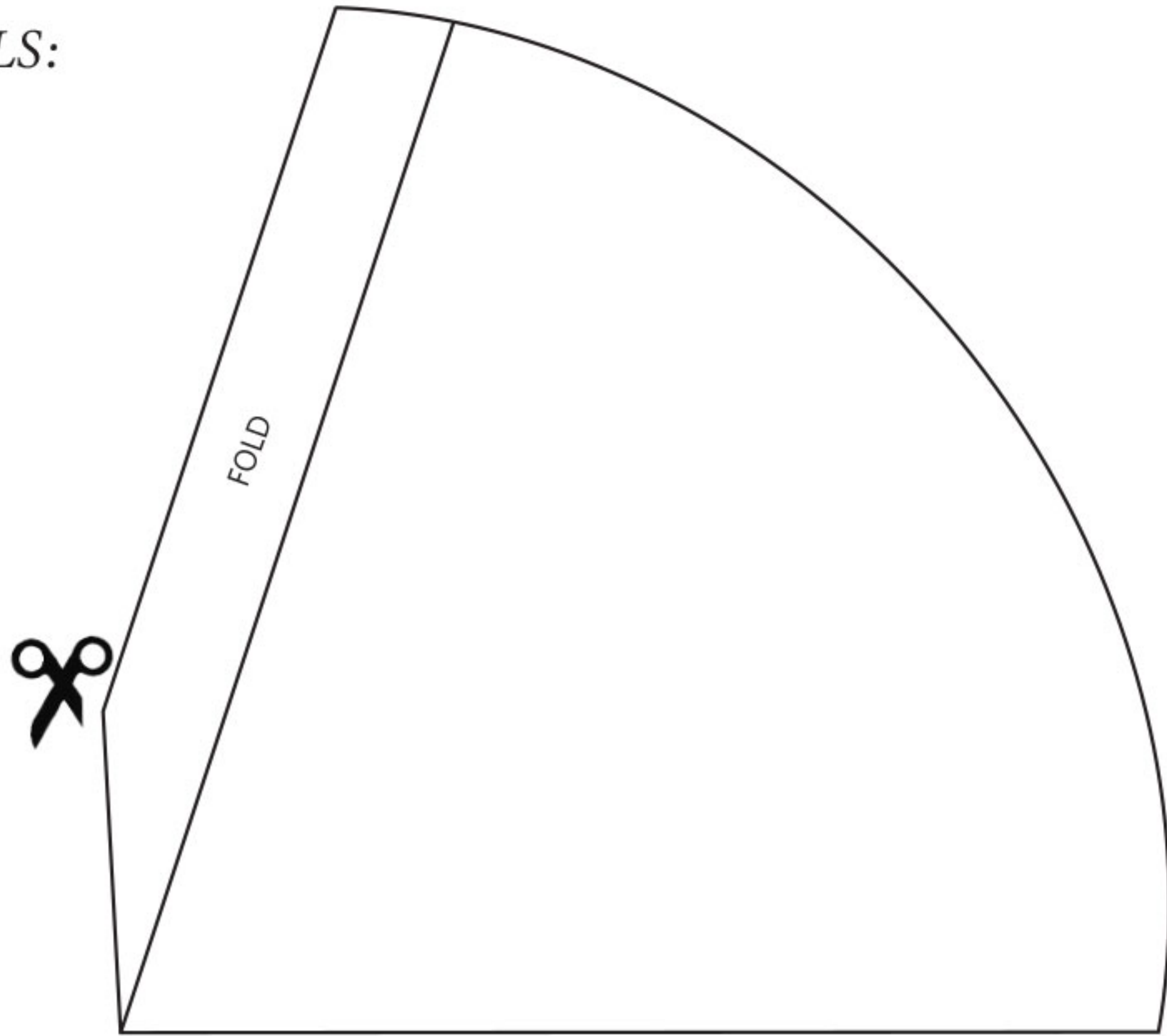
SAMUEL & SONS

PASSEMENTERIE

MATERIALS:

- Paper
- Scissors
- Yarn
- Glue

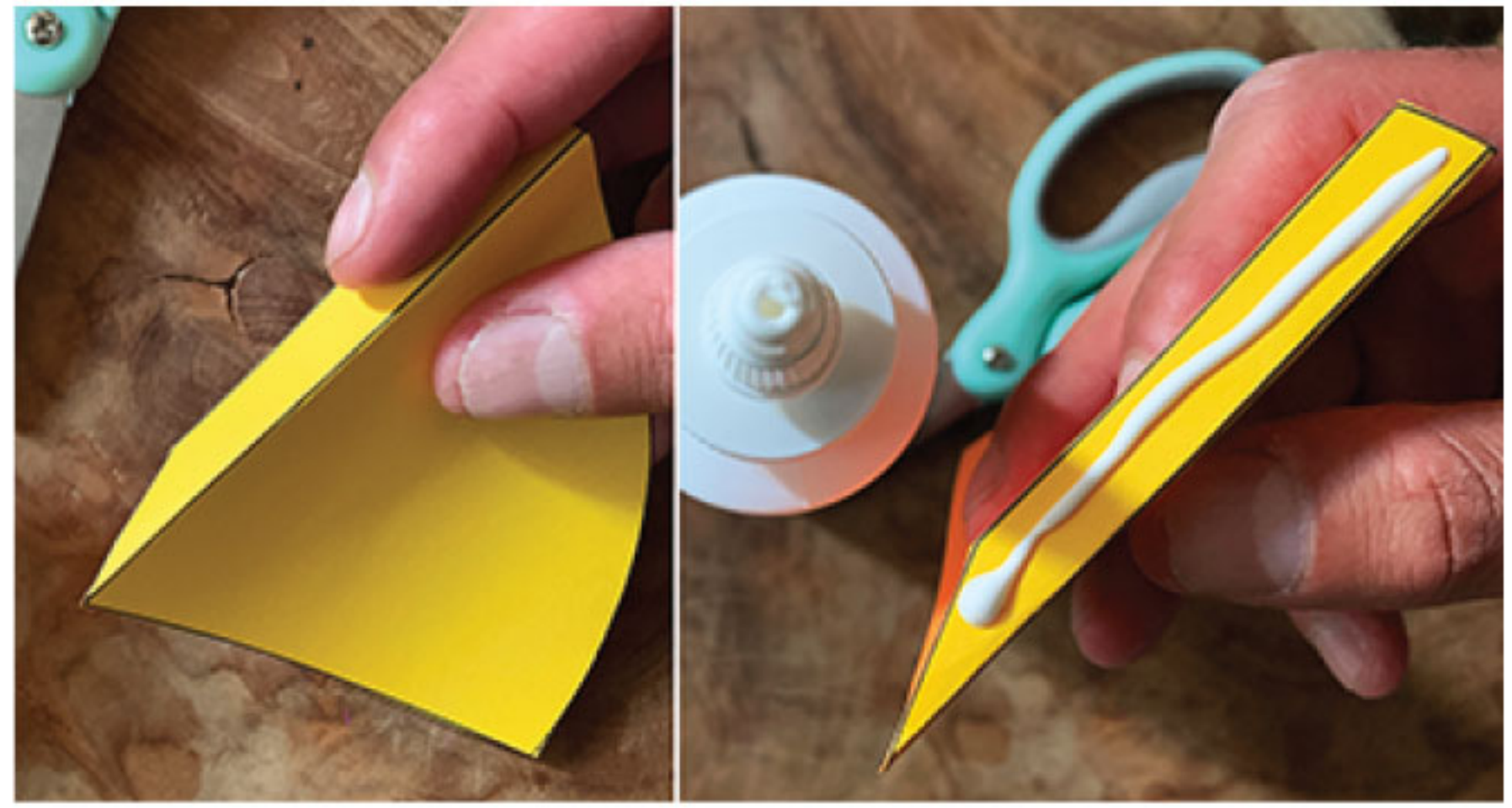
ICE CREAM CONE (x1)



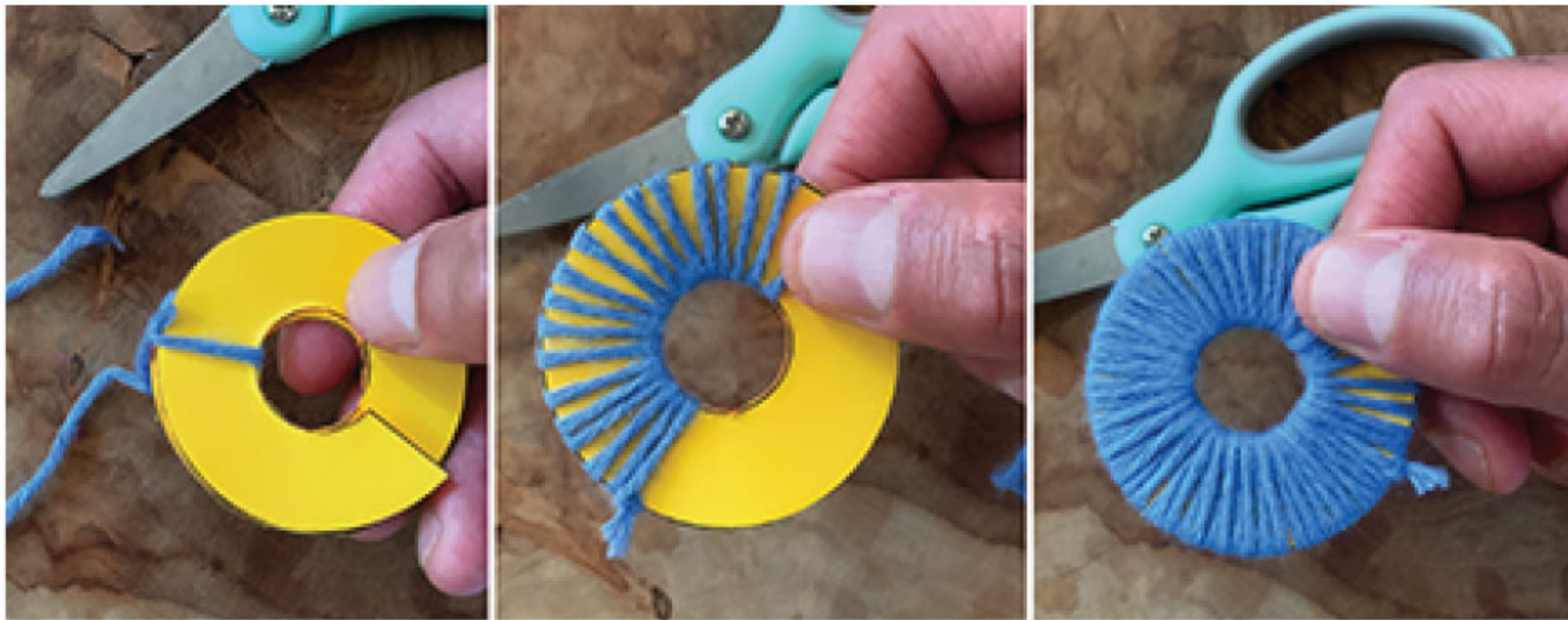
POM POM (x1 PAIR)



Print your pattern.



Fold the ice cream cone at the mark and apply some glue, then press it with the other end to get the shape of the cone.



Cut the two circles and attach a piece of yarn with a knot. Then go around a few times until your circles are completely covered with your yarn.



Move your yarn over slightly and find the opening between both circles with your scissors and cut all around.
Then cut a 10" piece of yarn and run it between both circles and tie a couple of strong knots to keep all your pieces in place. Then remove your circle patterns and fluff your finished pom-pom!



FOLLOW US ON
INSTAGRAM TO
WATCH VIDEO
TUTORIALS FOR
THESE PROJECTS!
[@samuelandsons](https://www.instagram.com/samuelandsons)

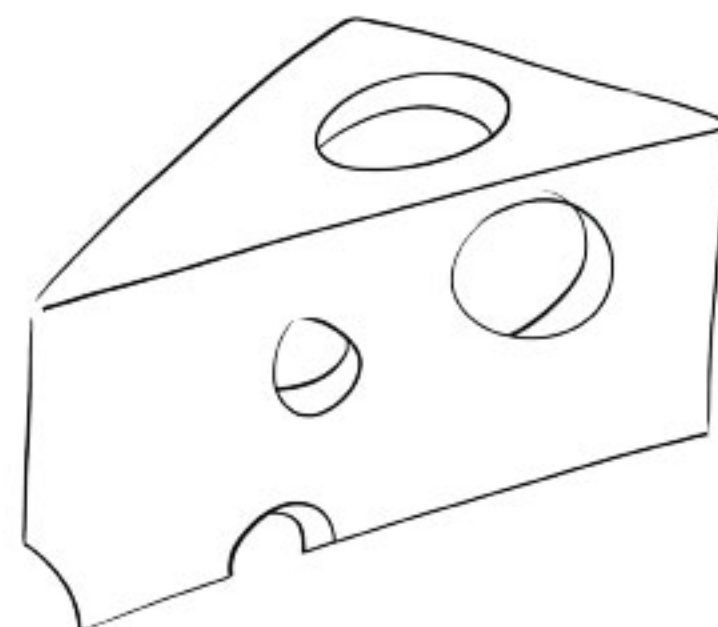
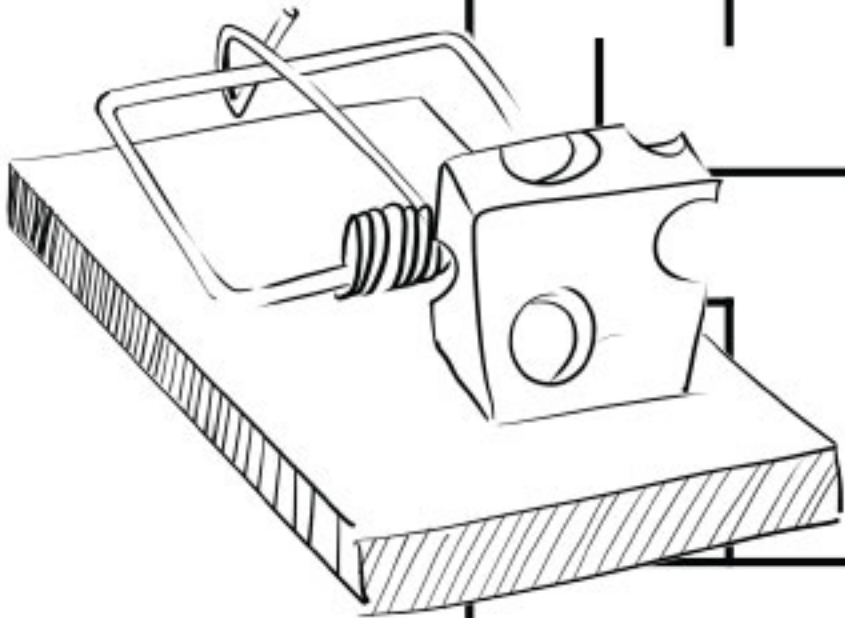
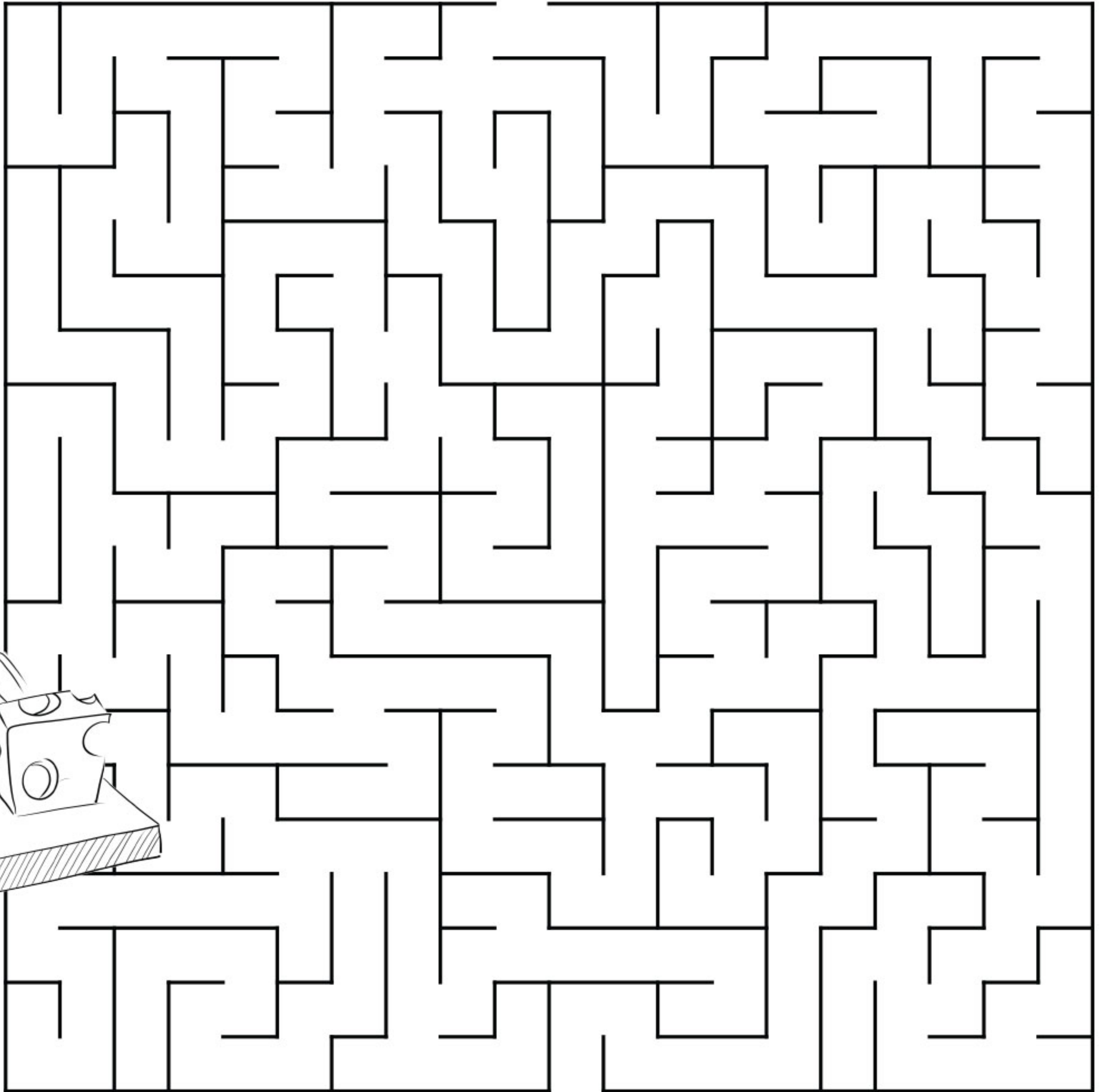
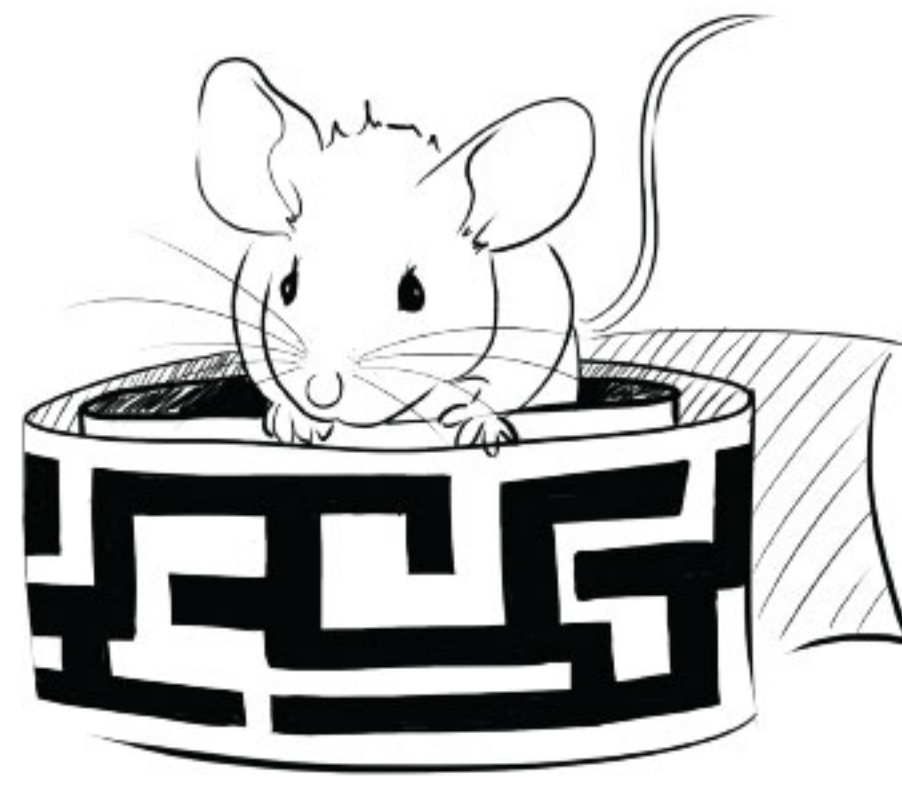


Find What
You're
Looking
For

SAMUEL & SONS IS TRIM.

www.samuelandsons.com





INSTRUCTIONS:

Help the little mouse find its way to the cheese.



Show us your projects! Tag your **#PetitsArtistesProject** on Instagram to share your family's creations.

